

The Personalised Digital Learning Programme (PDLP)

Briefing for Parents

A PRESENTATION BY
MINISTRY OF EDUCATION, SINGAPORE

The National Digital Literacy Programme (NDLP) and the PDLP

An Overview

The National Digital Literacy Programme (NDLP)

1. The NDLP was launched in March 2020 to help students **strengthen their digital literacy and acquire digital skills** needed to navigate an increasingly digitalised world.
2. Under the NDLP, every secondary school student will **own a school-prescribed Personal Learning Device (PLD)**. Students may use funds from their Edusave Account to pay for the PLD.

Intended Outcomes of the PDLP

The use of the PLD for teaching and learning aims to:



**Support the Development of
Digital Literacy**



**Support Self-Directed and
Collaborative Learning**



**Enhance Teaching and
Learning**

Learning with a PLD

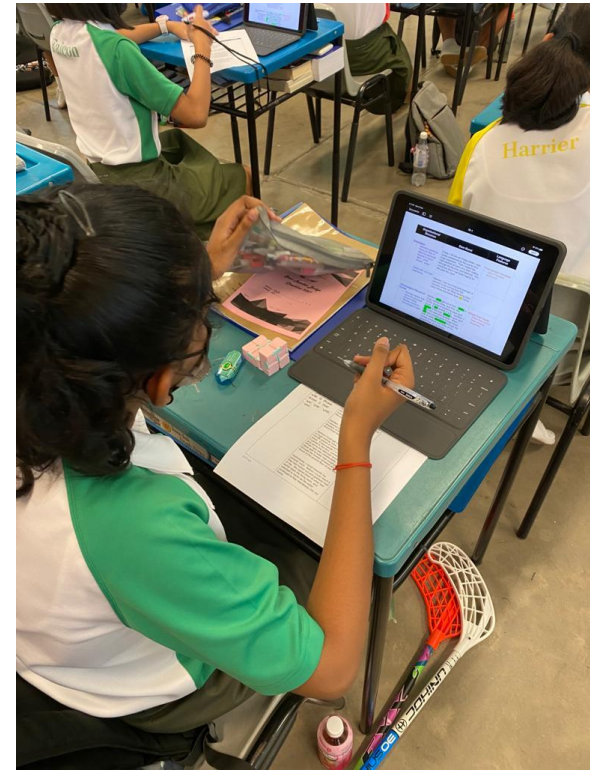
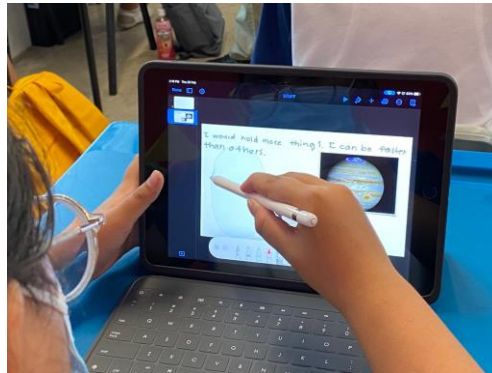
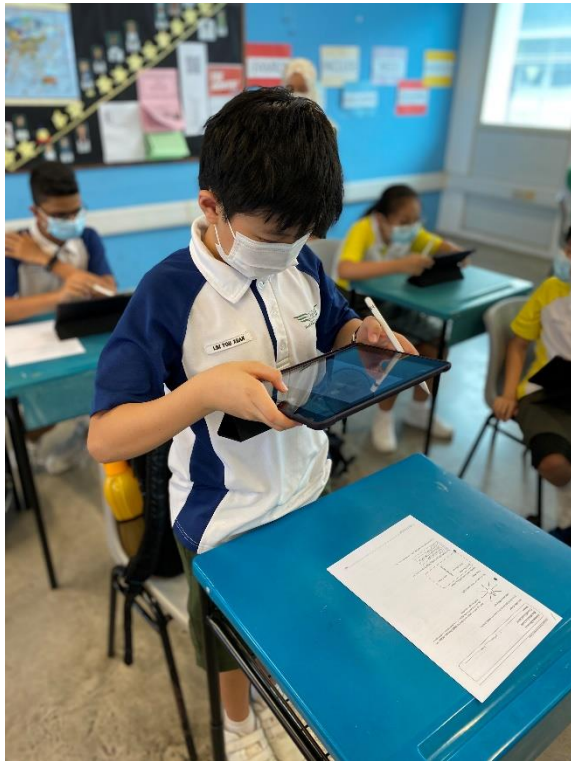
Changkat Changi Secondary School

Our Programmes

How will your child use the Personal Learning Devices?

At **CCSS**, your child will be...

Excited to learn in a Blended Approach



How will your child use the Personal Learning Devices?

At **CCSS**, your child will be...
applying their learning via



Student-centered Opportunities for
Aerospace Industries



How will your child use the Personal Learning Devices?

At **CCSS**, your child will be...

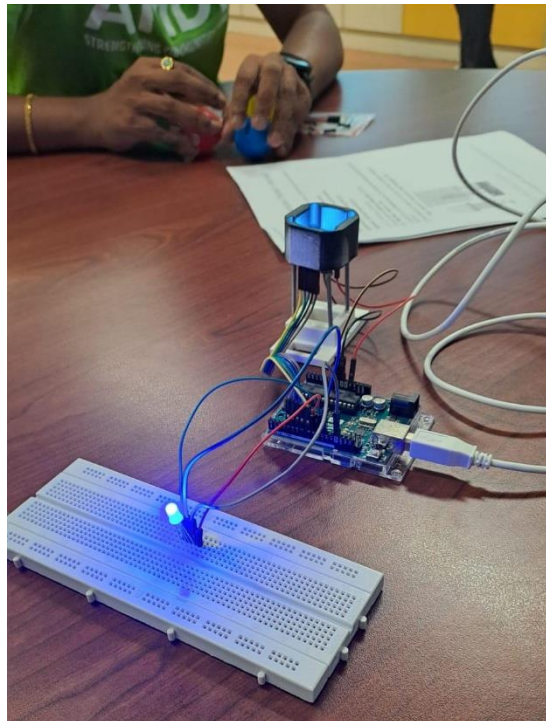
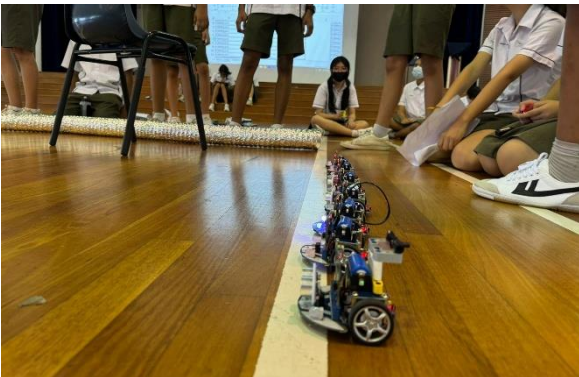
*Developing their 21st CCs &
be discerning users of technology*



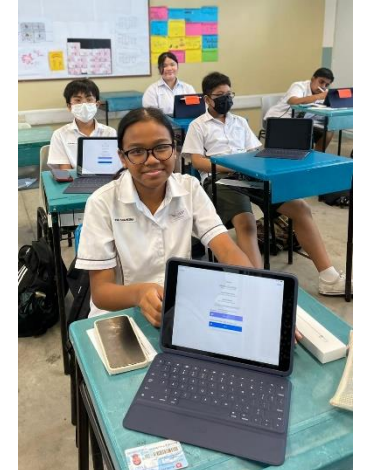
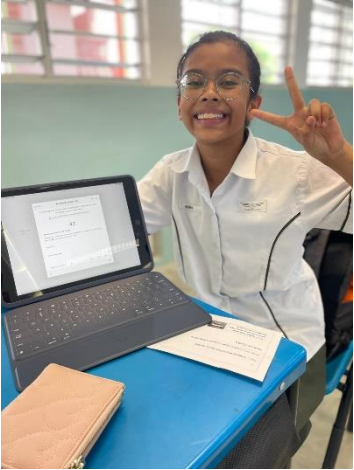
How will your child use the Personal Learning Devices?

At **CCSS**, your child will be...

*Developing their 21st CCs &
be discerning users of technology*



2024/5 Sec 1 PLD Rollout



**Supporting Students in the Safe
and Effective Use of the Devices**

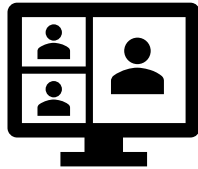
Cyber Wellness Concerns Identified by Local Studies/Surveys



**Harmful Online
Content**



**Gaming and
associated risks**



Cyberbullying



**Excessive social
media use**

Supporting Students in the Safe and Effective Use of the Devices

To enable a safer digital environment for learning with the use of PLDs, schools have implemented the following measures:

- School rules on digital device use
- Classroom management and routines
- Cyber Wellness Education in CCE
- Partnering parents/guardians to support students in their use of technology for learning
- MOE Device Management Application (DMA) to support a safer digital environment for learning

No smartphone use in secondary schools from 2026, including during recess and CCAs

[Sign up now](#): Get tips on how to help your child succeed



MOE said in a statement that students' devices will have to be kept in designated storage areas such as lockers or in students' school bags during school hours.

Smartwatches fall under the guidelines as they enable communication through messaging and access to apps including social media, which can lead to distractions, passive screen use and reduced interaction with their peers, it added.

CCSS Handphone Policy 2026

Students must lock their smartphones/smartwatches in the lockers during school hours (including recess, CCA, supplementary/enrichment/ remedial lessons etc).

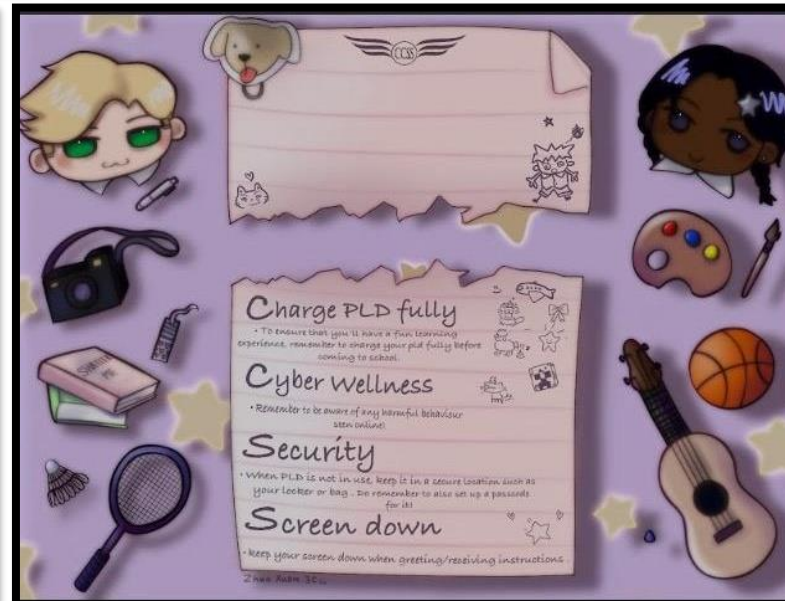
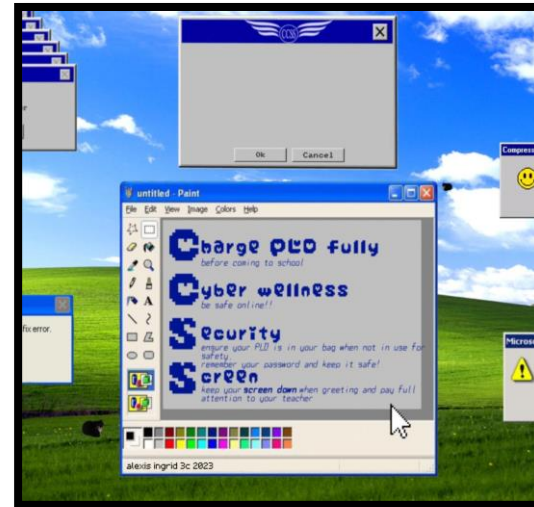
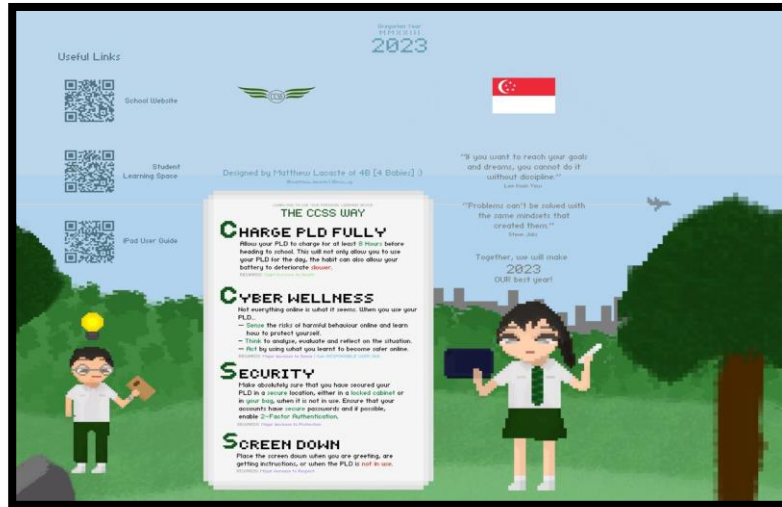
Students will have access to their PLDs throughout the school hours for learning purposes. (DMA in force)

Students can only retrieve their handphones / smart devices at the end of day, enrichment lesson or end of CCA.

Students must buy and use personal padlocks.



Classroom Management and Routines



Cyber Wellness Education in CCE

Educating students on Cyber Wellness

Cyber Wellness lessons will feature significantly in the Character and Citizenship Education (CCE). The broad topics covered in Cyber Wellness are:

- Cyber Use
- Cyber Identity
- Cyber Relationships
- Cyber Citizenship
- Cyber Ethics










Cyber Wellness Education in CCE

Throughout their Secondary School education, students will learn about:

- Balanced use and self control
- Cyber bullying and Upstanding
- How to be a positive influence online
- How to handle online falsehoods
- How to manage social media (peer influence, emotions, echo chambers)
- Online relationship and Online safety (grooming, self disclosure)
- To respect intellectual property rights

Cyber Wellness Programmes

In addition to these lessons, through various programmes in school, students will continue to learn to be **respectful, safe, and responsible users of technology.**

Workshops	  
Seminars	  
Competitions	  

Parents'/Guardians' Role

- Parents/guardians play a crucial role in guiding your child/ward to use devices responsibly and safely. We would like to partner parents/guardians so that students are well supported in their use of technology for learning.
- As parents/guardians, you can help in the following ways:
 - Model good digital habits for your child/ward e.g., parents/guardians not using devices during family meals.
 - Know your child/ward well and have conversations with your child/ward about safe and responsible use of technology.
 - Discuss and come up with ground rules for internet/device usage that both your child/ward and you can agree with.
 - Encourage your child/ward to use productivity tools on his/her PLD, to organise information and simplify tasks for efficiency.

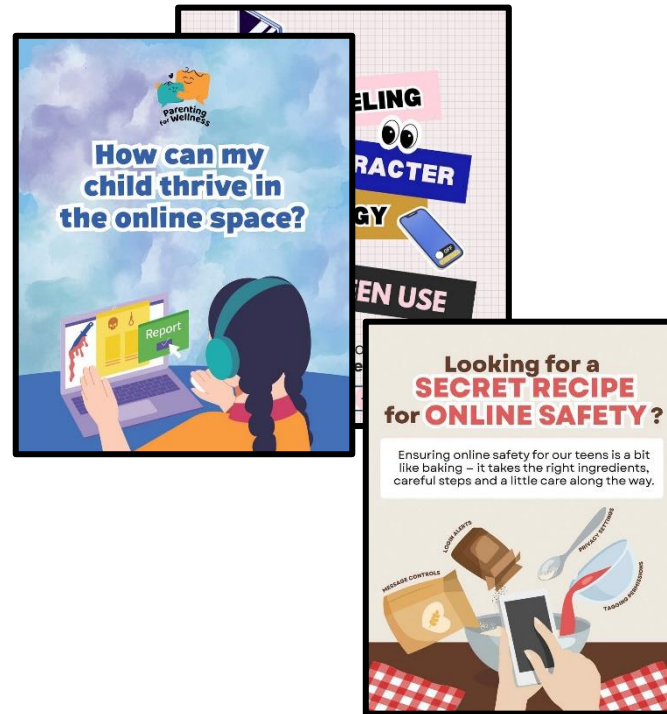
Supporting Resources

Here are some resources that you can refer to:

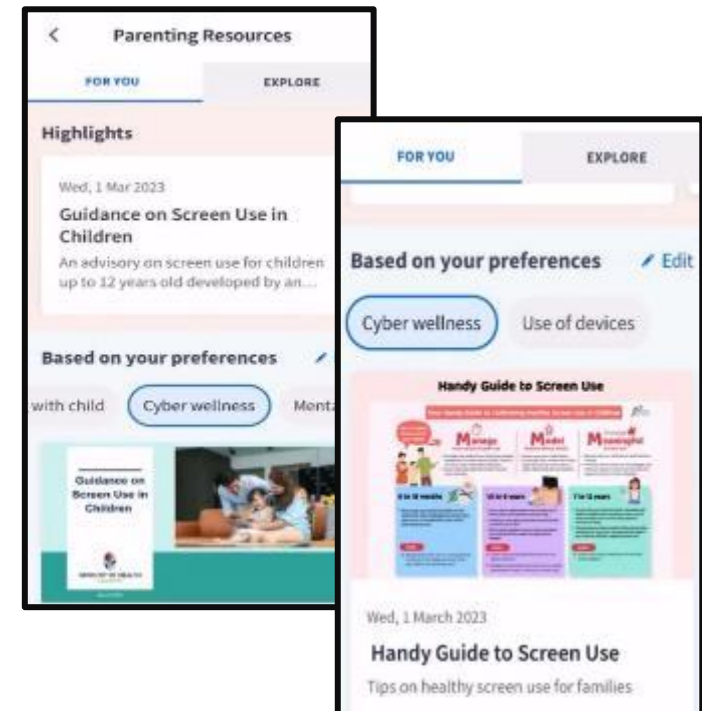
A. Parent Kit



B. Bite-sized tips and advice via Parentingwith.MOEsg Instagram page



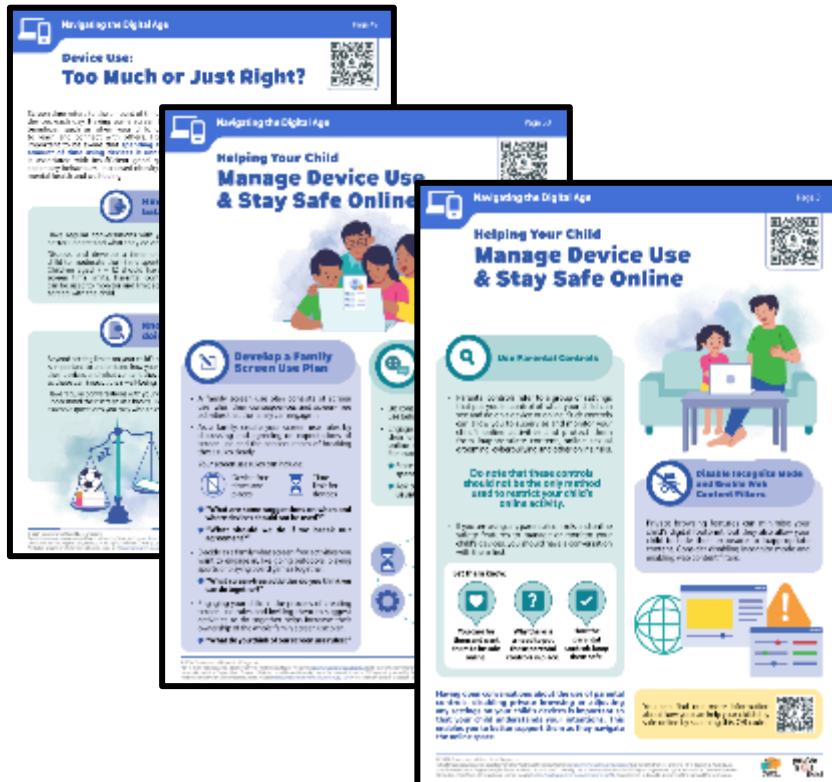
C. Resources from MOE and other agencies (available on resources repository in Parents Gateway)



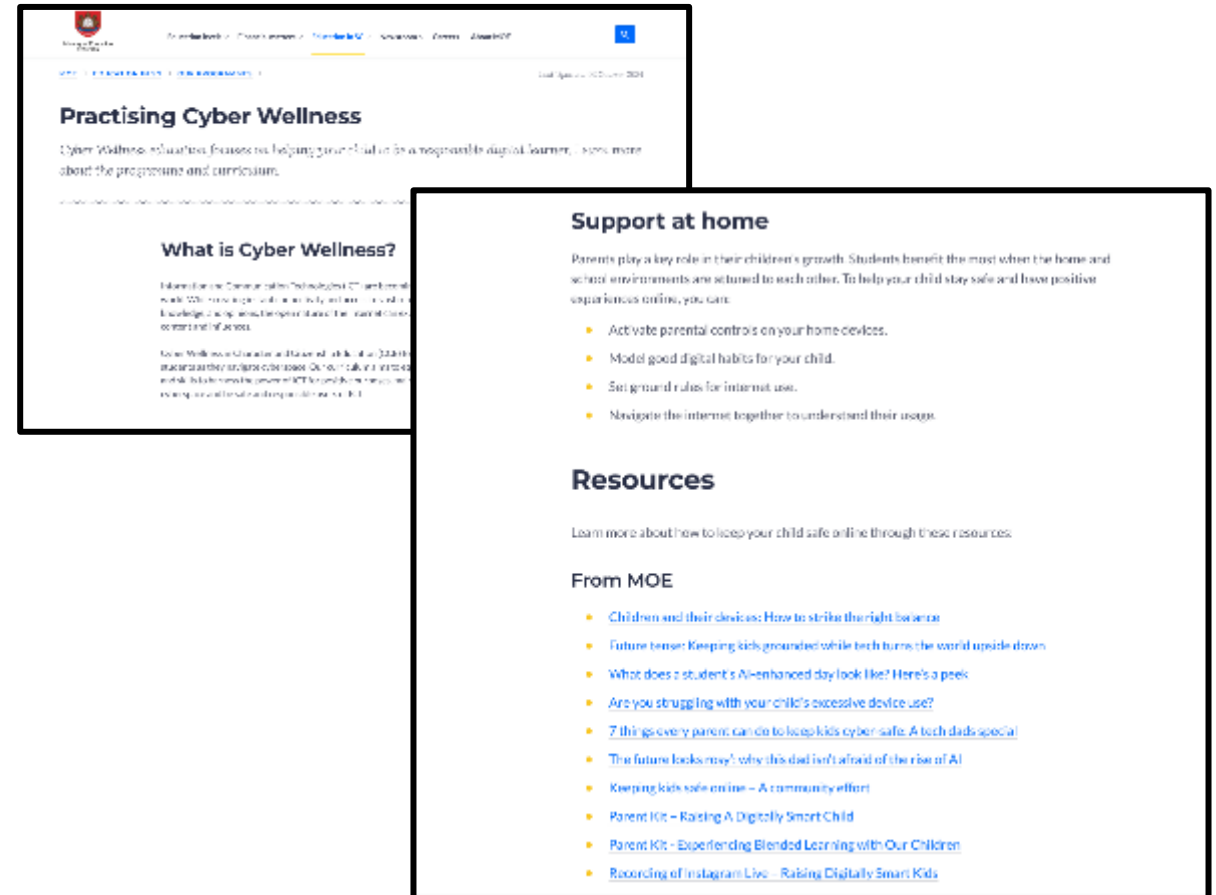
Supporting Resources

D. Parenting for Wellness Toolbox for Parents and Parenting for Wellness Website on Parent Hub

The Parenting for Wellness initiative provides bite-sized resources (practical tips and strategies) on building strong parent-child relationships, supporting your child's mental well-being and parenting in the digital age.



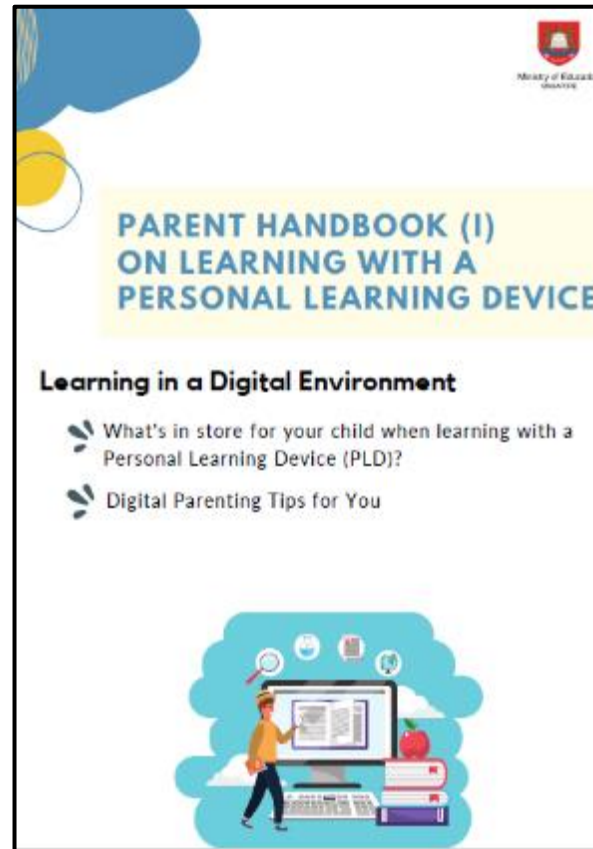
E. More resources are available via the MOE Cyber Wellness Webpage



Supporting Resources

F. Parent Handbooks (I) and (II) on Learning with a Personal Learning Device

These Handbooks provide tips on supporting your child in the use of PLDs for learning and are shared via the PG notification together with the letter to purchase PLDs.



Role of the MOE Device Management Application (DMA) in Providing a Safer Digital Environment for Learning

MOE DMA Installation

- The MOE DMA solution for iPad, Jamf, is an app that will be installed on all students' PLDs to support their safe and responsible use of devices.
- The DMA will be funded by MOE.
- The installation of the MOE DMA applies to both devices purchased through the school and any student-owned devices that parents/guardians opt for the student to use instead of the school-prescribed PLD.
- The MOE DMA will be installed after the collection of the device. Students will be guided on the installation.
- The MOE DMA will be uninstalled from the device when students graduate or leave the school.

In-School DMA Settings (Default)

Schools will determine DMA settings for **in-school use**. As a default, these settings will continue to be in place after school as well:

- MOE and the school will set the level of web content filtering, including filtering objectionable content or content that may not be conducive to teaching and learning (e.g., online messaging, social media, pornography, gambling, or websites containing extremist content).¹
- School hours are defined **to be from 6:00 am to 5:00 pm and after school hours-from 5:00 pm to 10:30 pm**. The device will **shut down at 10:30 pm by default**.²
- The school will determine the applications and programs to be installed to support teaching and learning.

After-School DMA Parent Options

1. After-School DMA Parent Options provide parents with the flexibility in managing their child's/ward's use of PLD after school hours.
2. The following tables outline the different levels of restrictions, controls, and monitoring for each DMA option after school hours.

Default	Option A	Option B
Default Setting (Note: This will apply if no alternative options are chosen)	DMA settings can be modified by Parents/Guardians after school hours	DMA will be inactive after school hours¹
For parents/guardians who want their child's/ward's use of the PLD to be restricted only to teaching and learning, and prefer to leave it to the school to decide on DMA settings after school hours.	For parents/guardians who prefer to take charge of the level of restrictions for their child's/ward's use of the PLD after school hours regulated by the DMA.	For parents/guardians who do not want their child's/ward's use of the PLD after school hours to be regulated by the DMA at all.

¹ No data will be collected after school hours when the DMA is inactive.

- Having default school settings continue after school hours is the best option for parents/guardians who prefer not to, or do not feel ready to manage their child's/ward's device use on their own.
- Parents/guardians can request to change their choice of DMA settings, which is the existing practice.

After-School DMA Parent Options

	Default Setting (This will apply if no Alternative Options are chosen)	Alternative Setting: Option A (DMA settings can be modified)	Alternative Setting: Option B (DMA will be inactive only after school hours)
Protect students from objectionable content	<p>Web content filtering will include, and not limited to, the following categories:</p> <ul style="list-style-type: none"> • Violent/extremist content • Sexual/pornographic content • Gambling-related content • Suicide/self-harm content • Cyberbullying content • Content endangering public health 	<p>Parents/Guardians will be able to include additional web content filtering using the Jamf Parent app. However, parents/guardians cannot allow access to web content that is filtered out under the Default Setting.</p>	<p>No content filtering after school hours.</p>

After-School DMA Parent Options

	Default Setting (This will apply if no Alternative Options are chosen)	Alternative Setting: Option A (DMA settings can be modified from the Default settings in place)	Alternative Setting: Option B (DMA will be inactive only after school hours)
Reduce distractions from learning through control of applications	Parents/Guardians will <u>not</u> be able to install additional applications.	<p>Parents/Guardians will be able to install additional applications after school hours by signing in to the Apple App Store using their personal Apple Accounts.</p> <p>Applications installed by parents/guardians/students will not be accessible during school hours.</p> <p>Parents/Guardians can limit after school access to applications that they install on the PLD.</p>	<p>Parents/Guardians/Students will be able to install additional applications after school hours by signing in to the Apple App Store using their personal Apple Accounts.</p> <p>Applications installed by parents/guardians/students will not be accessible during school hours.</p>

After-School DMA Parent Options

	Default Setting (This will apply if no Alternative Options are chosen)	Alternative Setting: Option A (DMA settings can be modified from the Default settings in place)	Alternative Setting: Option B (DMA will be inactive only after school hours)
Limit screen time	The school will define the specific hours during which the student can use the PLD.	Parents/Guardians can modify the amount of screen time for their child/ward by setting the PLD sleep hours to any time between 5:00PM to 10:30PM . This can be done on the Jamf Parent Application. ² Parents/Guardians can determine the duration of use of specified applications.	No limitation on duration of screen time. after school hours. Sleep hours are not enforced. ³

² During school hours, the screen time limits set by the school will override parents/guardians' settings.

³ It is not recommended to install other parental controls (e.g. Apple's Family Sharing/Screen Time) as this could result in conflicting settings between school and parent controls. It may result in unexpected issues where some controls such as screen time restrictions may not work as intended.

After-School DMA Parent Options

	Default Setting (This will apply if no Alternative Options are chosen)	Alternative Setting: Option A (DMA settings can be modified from the Default settings in place)	Alternative Setting: Option B (DMA will be inactive only after school hours)
Monitor students' cyber activities	Parents/Guardians will not be able to track their child's/ward's web browsing history due to Apple's Privacy Policy.		
Provision of Jamf Parent account	X	✓	X

DMA Options Explained (Weekday School Term)



	6 am - 5 pm	5pm – 10.30pm	10.30pm – 6am (Sleep Hours)
Default Option	<div>DMA Settings Applied (School Decided)<ul style="list-style-type: none">• Apps that school use for T&L• Whitelist and blacklist filtering applied</div>	<div>DMA Settings Applied (School Decided)<ul style="list-style-type: none">• Apps that school use for T&L• Whitelist and blacklist filtering applied</div>	<div>SLEEP TIME Device is Locked</div>
Option A			
Option B			

DMA Options Explained (Weekday School Term)



	6 am - 5 pm	5pm – 10.30pm	10.30pm – 6am (Sleep Hours)
--	-------------	---------------	--------------------------------

Default Option			
-------------------	--	--	--

Option A	DMA Settings Applied (School Decided) <ul style="list-style-type: none">• Apps that school use for T&L• Whitelist and blacklist filtering applied	Modified DMA Settings Applied <ul style="list-style-type: none">• Parents modify settings in the DMA portal	SLEEP TIME Device is Locked
----------	---	--	---------------------------------------

Option B			
----------	--	--	--

DMA Options Explained (Weekday School Term)



	6 am - 5 pm	5pm – 10.30pm	10.30pm – 6am (Sleep Hours)
Default Option			
Option A			

Option B

**DMA Settings Applied
(School Decided)**

- Apps that school use for T&L
- Whitelist and blacklist filtering applied

DMA Removed = No Restriction

DMA Options Explained (Weekends and Holidays)



	6am – 10.30pm	10.30pm – 6am (Sleep Hours)
Default Option	<div>DMA Settings Applied (School Decided)</div> <ul style="list-style-type: none">• Apps that school use for T&L• Whitelist and blacklist filtering applied	<div>SLEEP TIME Device is Locked</div>
Option A	<div>Modified DMA Settings Applied</div> <ul style="list-style-type: none">• Apps that school use for T&L• Whitelist and blacklist filtering applied• Parents modify settings in the DMA portal	<div>SLEEP TIME Device is Locked</div>
Option B	<div>DMA Removed = No Restriction</div>	

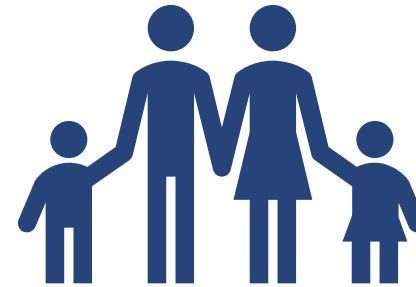
Support for Parents/Guardians

Parents/guardians may wish to consider the following questions to decide the After-School DMA Parent Option that best suits your child/ward.



A. Child's/ward's current device usage habits

- How much time does my child/ward spend on their device?
- How well is my child/ward able to regulate their device usage on their own?
- Does my child/ward get easily distracted while doing online learning?



B. Parents'/Guardians' involvement

- How confident and familiar am I with managing my child's/ward's cyber wellness?
- Are there existing routines and open conversations on the use of the Internet at home?
- Am I aware of how to prevent different types of cyber threats that my child/ward might face?

Data Security

- All user data collected through the MOE DMA will be stored in secure servers managed by appointed DMA Vendors with stringent access controls and audit trails implemented.
- Data such as device information, email address of students and parents, device information will be deleted when the student graduates or leaves school. Website URLs accessed by students will be deleted at the end of each term.
- The MOE DMA solutions used are cloud-based Software-as-a-Service (SaaS) solutions and are trusted solutions that have been operating for many years. They have also been subject to regular security reviews and assessments by independent reviewers.

Data Security

- MOE DMA solutions have sufficient security robustness to ensure that the data collected is properly stored and protected. MOE will also subject the DMA Vendors to regular security system audits based on tender requirements.
- To prevent unauthorised access, DMA Administrators and DMA Vendors will be required to access their accounts using 2-factor authentication or the equivalent to ensure proper accountability for information access and other activities performed. There will be regular account reviews and audits for DMA Administrators' and DMA Vendors' accounts.

Data Collected by the MOE DMA

1. The MOE DMA does **NOT** collect any of the following data:
 - Login IDs and passwords entered into websites or into any applications
 - Actions performed (e.g., posts, online comments, items added to a shopping cart, etc.) when visiting websites and using apps
 - Documents and photos stored in the PLDs
 - PLD location
 - Webcam videos and microphone recordings
2. Parents may update their personal data (e.g., email addresses, names) by contacting the school, in accordance with the Personal Data and Protection Act (PDPA).

Device and Funding Information

PLD FOR CHANGKAT CHANGI SECONDARY SCHOOL



Model: Apple iPad 11-Inch (A16)

Processor: A16 Bionic Processor

Memory (GB): 6GB

Storage (GB): 128GB

The school will be using **iPad 11-Inch (A16) 11th Gen (128GB Wi-Fi)** for teaching and learning.

Total cost of the bundle includes 3+1 year warranty and 3+1 year insurance with GST: **S\$829.30**

PLD Bundle

Device Bundle includes
<ul style="list-style-type: none">• Apple iPad (11th Gen, 128GB Wi-Fi)• Apple Pencil (USB-C)• Logitech Ruggedized Combo 4 (with Keyboard)• Insurance and Warranty

Your child’s/ward’s PLD will come with the **Enhanced Device Bundle** which includes:

- 4-year warranty
- 4-year insurance (which includes 2 repairs or 1 replacement claim)

Warranty refers to the Apple Care+ found commercially

Please note that the price of the PLD Bundle may appear to be higher than similar models on the retail market as the price of those devices usually does not include extended warranty and insurance coverage.

Insurance Coverage

The package includes:

Insurance Coverage	Claimable
<ul style="list-style-type: none">• Fire• Lightning• Power Surges• Accidental e.g water spillage, drop etc• Theft due to forcible entry• Robbery <p>* Accidental loss will not be covered by insurance.</p>	<p>*2 repairs or 1 replacement claim (4-year insurance)</p>

Technical Support for Students' Devices

Technical support will be provided to students through:

1. Service Desk set up in school (ITR1) during school hours
 - Troubleshooting of device issues
 - Solve connectivity issues
 - Collection of devices to be sent for repairs (*fortnightly basis*)
2. Apple Retail Store @ Jewel Changi Airport (*220m from Changi Airport MRT*)
 - Repair of devices (*hardware issues*)
 - Mon – Thu (1100 – 2100)
 - Fri – Sun (1100 – 2200)

Funding Support for Singapore Citizen (SC) Students

- **The cost of the device bundle can be paid using your child's/ward's Edusave account**, after setting aside provision for payment of miscellaneous fees.
- To ensure the affordability of devices, MOE has provided Edusave top-ups from 2020 to 2023 to all eligible Singaporean students in primary and secondary schools. In 2025, MOE has provided a \$500 Edusave top-up for students aged 13-16 years old.
- These top-ups are on top of the annual \$290 credited into the Edusave account for Secondary School students and \$230 for Primary School students.

Funding Support for Singapore Citizen (SC) Students

- For SC students who are on MOE Financial Assistance Scheme or whose family's monthly income meets the following criteria:

Gross Household Income (GHI) \leq \$4,000, or

Per Capita Income (PCI) \leq \$1,000

MOE will subsidise 50% of device bundle cost or \$350, whichever is lower.

- The remaining amount will be payable from the students' Edusave account. If there is insufficient balance in the students' Edusave account for the remaining amount, MOE will provide additional subsidy so that the cash out-of-pocket (OOP) is \$0.

Funding Scenario: Student A (SC)



**Apple iPad
11th Gen
(128GB Wi-Fi)**

Student A (SC on MOE FAS) GHI ≤ \$4,000 or PCI ≤ \$1,000	
Device Bundle Cost	\$829.30
Student Subsidy (50%)	\$414.70
Available Edusave Balance <i>(After setting aside for misc fees)</i>	\$200.00 before deduction \$200.00 will be deducted
Additional Subsidy	\$214.60
Cash Out-of-pocket	\$0.00

For more details on financial assistance, please approach the school.
Each student will subsequently receive a personalised bill

Funding Support for Singapore Citizen (SC) Students

- For SC students whose family's monthly income is:

$\$4,000 < \text{Gross Household Income (GHI)} \leq \$5,500$, or

$\$1,000 < \text{Per Capita Income (PCI)} \leq \$1,375$

MOE will subsidise 30% of device bundle cost or \$200, whichever is lower.

- The remaining amount will be payable from the students' Edusave account. If there is insufficient balance in the students' Edusave account for the remaining amount, MOE will provide additional subsidy so that the cash out-of-pocket (OOP) is not more than \$50.

Funding Scenario: Student B (SC)



**Apple iPad
11th Gen
(128GB Wi-Fi)**

Student B (Non MOE-FAS SC from lower income family) \$4,000 < GHI ≤ \$5,500 or \$1,000 < PCI ≤ \$1,375	
Device Bundle Cost	\$829.30
Student Subsidy (30%)	\$248.80
Available Edusave Balance <i>(After setting aside for misc fees)</i>	\$200.00 before deduction \$200.00 will be deducted
Additional Subsidy	\$330.50
Cash Out-of-pocket	\$50.00

For more details on financial assistance, please approach the school.
Each student will subsequently receive a personalised bill.

Funding Support for Singapore Citizen (SC) Students

- Subsidies will not be provided for SC students whose family's monthly:
 - Gross Household Income (GHI) is above \$5,500 or
 - Per Capita Income (PCI)[#] is above \$1,375.
- Parents/Guardians can use their child's/ward's Edusave or cash to defray the device bundle cost.

[#]PCI is Gross Household Income divided by the number of household members.

Funding Scenario: Student C (SC)



**Apple iPad
11th Gen
(128GB Wi-Fi)**

Student C (Not Eligible for Subsidy) GHI > \$5,500 or PCI > \$1,375	
Device Bundle Cost	\$829.30
Available Edusave Balance <i>(After setting aside for misc fees)</i>	\$200.00 (or more) , depending on current Edusave Balance \$200.00 (or more) will be deducted
Cash Out-of-pocket	\$629.30 (or less) , depending on current Edusave Balance

For more details on financial assistance, please approach the school.
Each student will subsequently receive a personalised bill.

What's Next?

Parental Consent for Procurement

1. Parents/Guardians can access the **Parental Consent for the Purchase of Personal Learning Device (PLD)** via a Parents Gateway (PG) notification* that will be sent to you on **20 Jan 2026**.
2. Parents/Guardians who want to use Edusave funds for the PLD (for Singapore Citizens students only), please access: <https://go.gov.sg/edusaveformsgso> by **29 Jan 2026**, if you have not done so previously.*

* Parents/Guardians without access to PG can request for the hardcopy letter via your child's/ward's form teacher.

For Singapore Citizens (SC) Students

Time Frame	Activity
Until 29 January	<p>1. Submit:</p> <ol style="list-style-type: none">consent to PLD purchase via the PG notification which includes the following:<ul style="list-style-type: none">Intent to Purchase Personal Learning Device (PLD);Authorisation Form for the Collection of PLDthe Standing Order (SO) for the use of Edusave Account via https://go.gov.sg/edusaveformsgso (for Singapore Citizen students only) if you have not done so previously. <p>Parents without access to PG can submit their consent via hardcopy.</p>
April 2026	Collection of devices by students

For Permanent Residents / International Students

Time Frame	Activity
Until 29 January	<ol style="list-style-type: none">1. Submit consent to PLD purchase which includes the following:<ul style="list-style-type: none">• Intent to Purchase Personal Learning Device (PLD);• Authorisation Form for the Collection of PLD
After End Feb 2026	Parent/Guardian to make payment via Giro/PayNow
April 2026	Collection of devices by students

Collection of Devices

Your child/ward will be collecting his/her device in school **in April Term 2 2026.**

If you would like to personally/have another adult to verify the condition of the device during collection with your child/ward:

- You may either collect the device personally or appoint an adult proxy to do so **at the vendor's service/collection centre***.
- Your child/ward would need to bring the device to school and arrange for the school's IT department to install the DMA.

Please approach the school for further advice or clarification if you would like to make this arrangement.

*Parents/Guardians (or adult proxy) will **not** be able to collect the PLD from the school.

Important Contacts / Helplines

To access / find out more about...	Contact / Helpline
This deck of slides	www.changkatchangisec.moe.edu.sg *NDLP page
Edusave balance	6260 0777
Financial assistance	General Office: 6785 9790

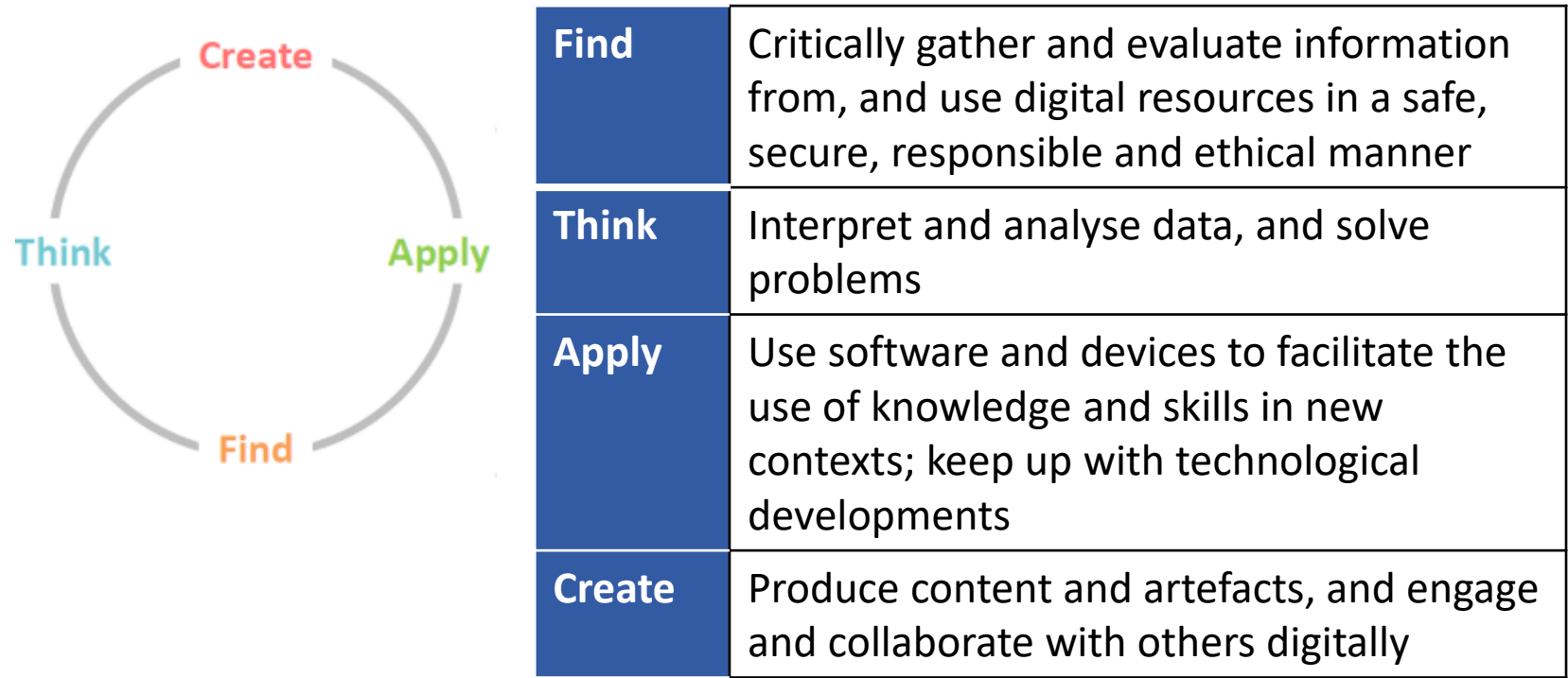


Ministry of Education
SINGAPORE

Drawer Slides

The National Digital Literacy Programme (NDLP)

The ‘Find, Think, Apply and Create’ framework:



Components of the MOE DMA

The MOE Device Management Application (DMA) software consists of the following three components:

- **Mobile Device Management Service (MDM)**
- **Classroom Management Service (CMS)**
- **Usage Management Service (UMS)**

MOE DMA Components and their Functions

1. Mobile Device Management Service (MDM)¹

This facilitates the **updating and management of the PLDs**, **protects PLDs from malicious software**, and **protects your child/ward from objectionable internet content, or content that may not be conducive to teaching and learning during school hours**.

The MDM carries out the following functions:

- Facilitates automatic installation of applications required for teaching and learning
- Filters objectionable content or content that may not be conducive to teaching and learning (e.g., social media, pornography, gambling, or websites containing extremist content)²
- Enables automatic updating of PLD OS and its applications in accordance with cybersecurity best practices.

¹ MDM is a **core service** that is required to deliver Classroom Management Service and Usage Management Service (which includes the Parental Control app).

² Youtube is not blocked by default as teachers use Youtube for teaching and learning. However, Youtube videos that are categorised as harmful by YouTube Restricted are blocked.

MOE DMA Components and their Functions

2. Classroom Management Service (CMS)³

Enables teachers to **manage the student's use of the PLD** during lesson time to improve classroom management and support effective teaching and learning. Teachers will only be able to view students' screens during lessons.

During lessons, teachers will be able to:

- Guide and monitor students' use of devices (e.g., lock or unlock screen to redirect students' attention or screen sharing)
- Launch specific applications and/or websites for teaching and learning on your child's/ward's device
- Facilitate the sharing of content

³CMS will be rolled out by Semester 1, 2025 for all schools.

MOE DMA Components and their Functions

3. Usage Management Service (UMS)*

Enables the school and/or parents/guardians* to **better supervise and set helpful limits for your child's/ward's use of the PLD after school.**

The UMS provides the following functions:

- Screen time control to allow school and/or parents/guardians to set usage limits so that your child/ward does not use the PLD excessively
- School and/or parents/guardians have control over the installation of applications to ensure that the device is used optimally for teaching and learning
- Filters objectionable content to protect students from harmful content
- Parents/Guardians can manage device usage of their child/ward

* Only available for parents/guardian on Option A.

Types and Purpose of Data Collected by the MOE DMA



**Data for DMA
Administrative
Purposes**



**Data for Application
Management**



**Data for Web Content
Filtering**



**Data for Sharing Students'
Screen**



Data for DMA Administrative Purposes

Essential for DMA and lesson set up and management of devices through DMA

Examples:

- Students' and parents'/guardian's information (name, school name, email addresses, and class)
- Apps installed in your child's /ward's PLD
- Device and hardware information (e.g. device model, storage space)

Accessible by:

- Teachers
- DMA Administrators in school and at MOE
- DMA Vendors
- Parents/Guardians¹

¹ Only parents/guardians who chose Option A for the After-School DMA Parent Option will have access of their child's/ ward's information i.e. student's name and email address, and the applications installed on the PLD.



Data for Web Content Filtering¹

Filtering of harmful content to ensure students' cyber safety

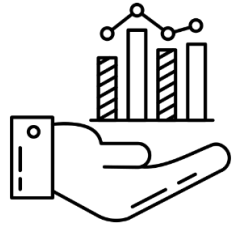
Examples:

- URLs accessed on the PLDs (*Actions performed on websites are **NOT** captured*)
- Date and time of the access
- Student profile (Name, School name)

Accessible by:

- DMA Administrators in school and at MOE¹
- DMA Vendors

¹Only aggregated web browsing history can be retrieved which does not reference to specific user.



Data for Application Management

To ensure that the installed apps are updated and functioning properly

Examples:

- Installed apps and programs
- Date and time that the apps and programs were last updated
- Application error data¹

Accessible by:

- Teachers (for activities during lessons)
- DMA Administrators in school and at MOE
- DMA Vendors

¹Teachers will not have access to the application error data.



Data for Sharing Students' Screen

To allow teachers to check that students are on task, and address questions in class

Examples:

- Only the streaming of 'live' screen view (*The screen view will **NOT** be stored*)

Accessible by:

- Teachers during lessons only

References

Information on Slide 10 are obtained from:

- SHE and Global Shapers Singapore Hub Survey, 2023- <https://www.digitalforlife.gov.sg/-/media/Digital-For-Life/Resources/Documents/2023/12/20230410-SHE-Infographics-on-Online-Myths.pdf>
- Microsoft Online Safety Survey, 2024 - <https://news.microsoft.com/wp-content/uploads/prod/sites/40/2024/02/Microsoft-Global-Online-Safety-Survey-2024.pdf>
- Ministry of Digital Development and Information survey, 2024 - <https://www.mddi.gov.sg/media-centre/press-releases/survey-on-childs-online-gaming-activities/>
- Institute of Mental Health, 2024 - https://www.imh.com.sg/Newsroom/News-Releases/Documents/NYMHS_Press%20Release_FINAL19Sep2024.pdf